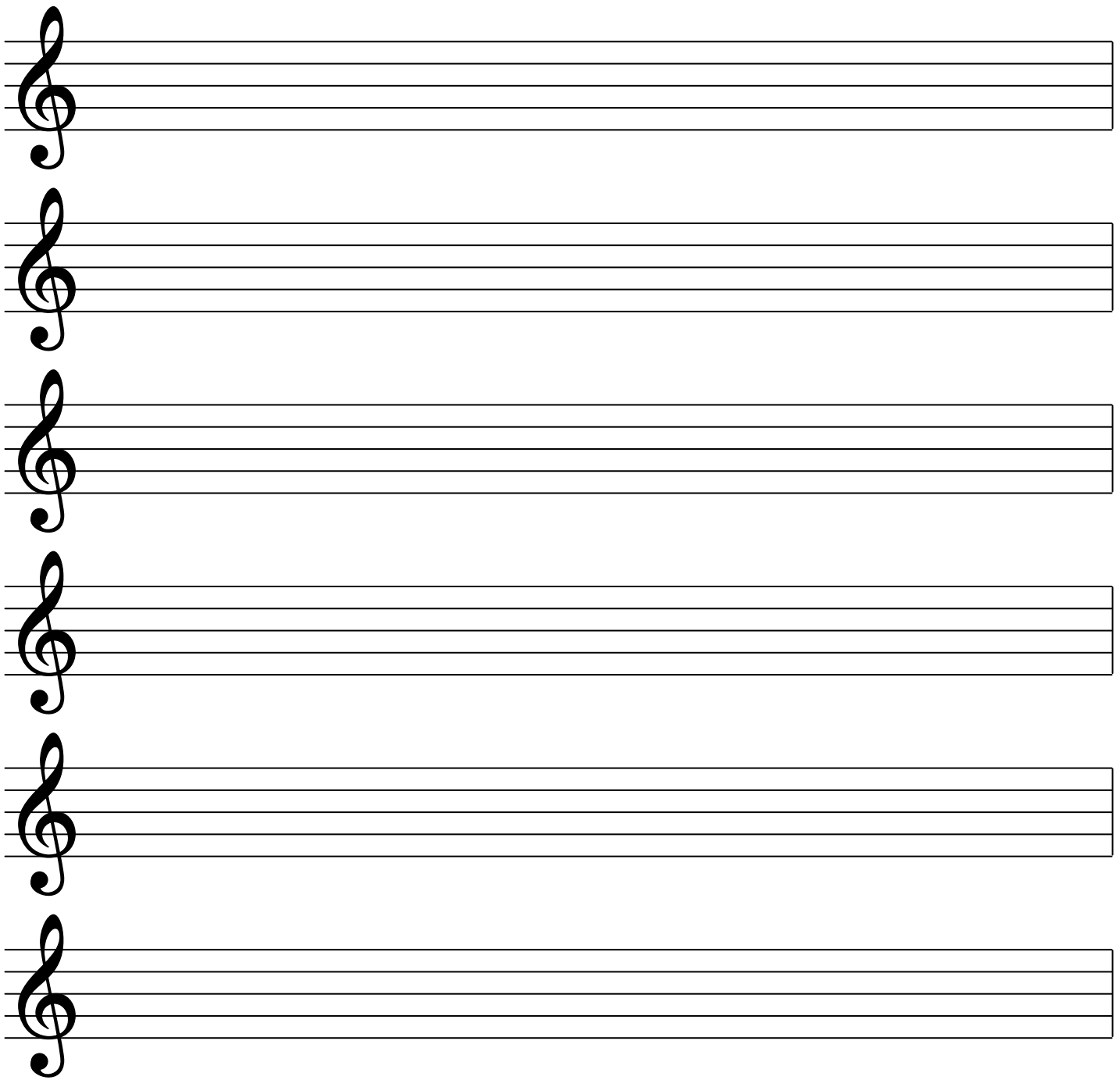
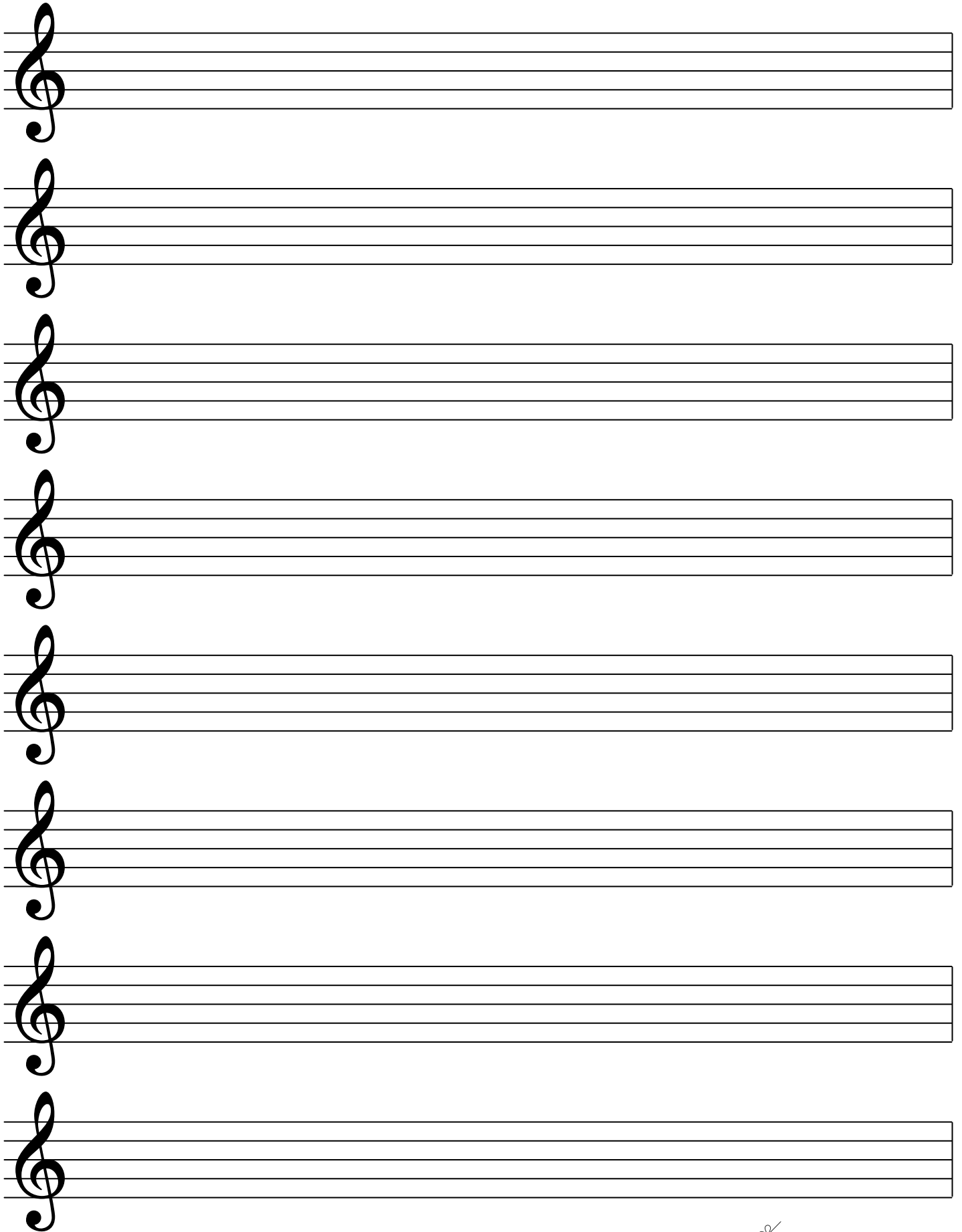
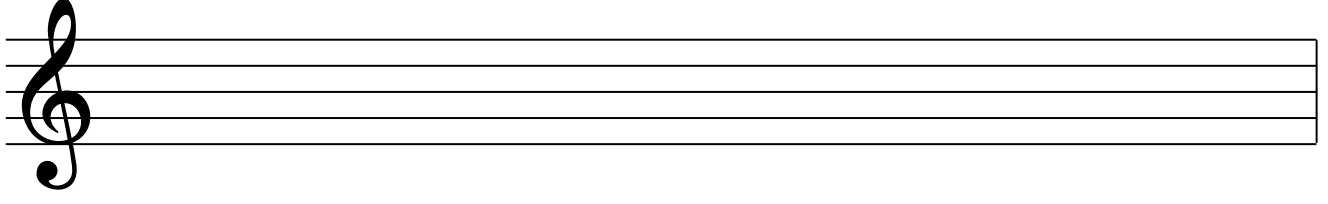
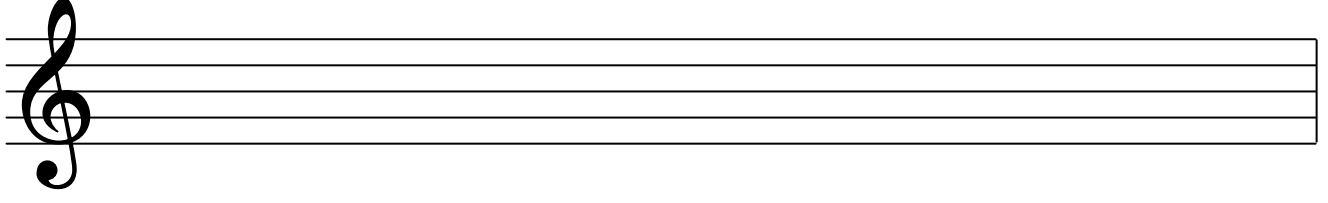
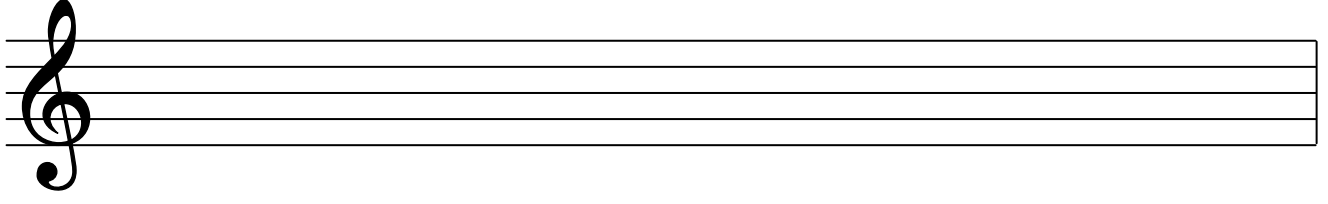
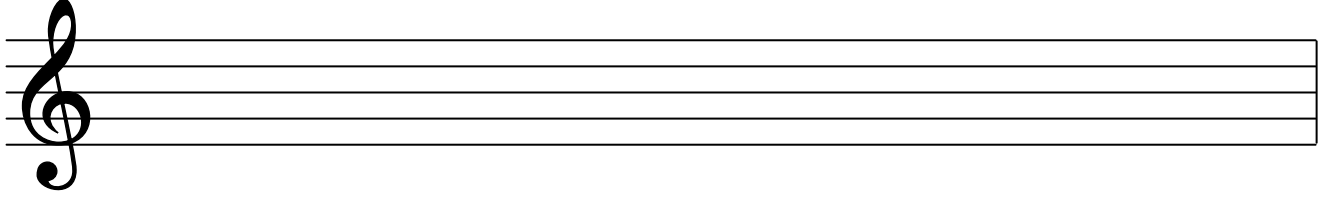
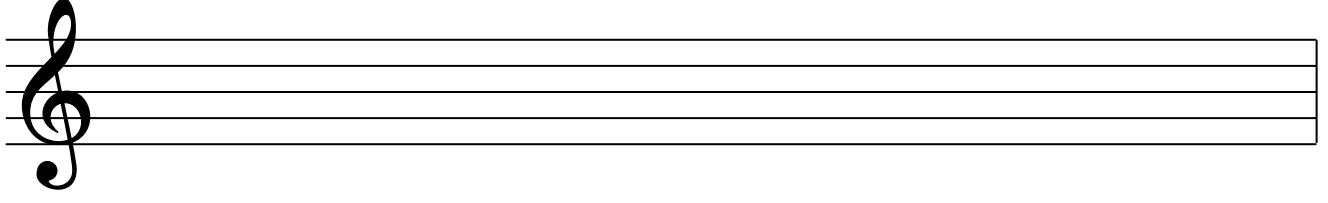
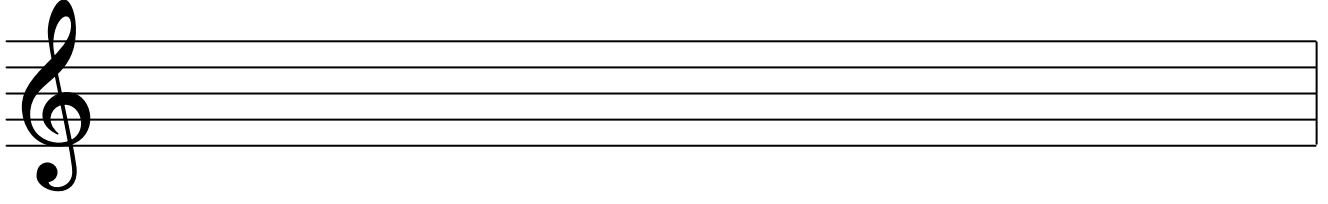
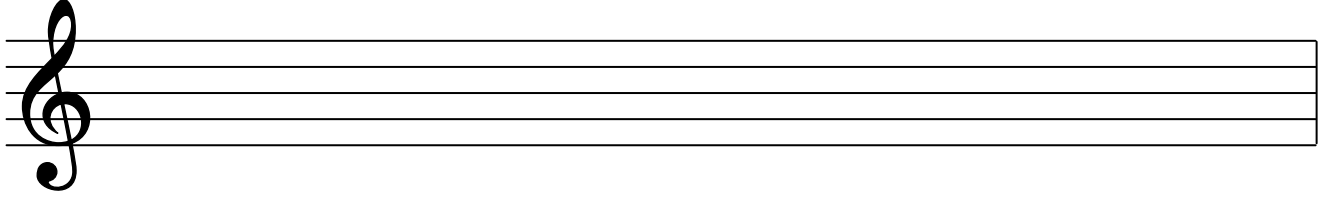
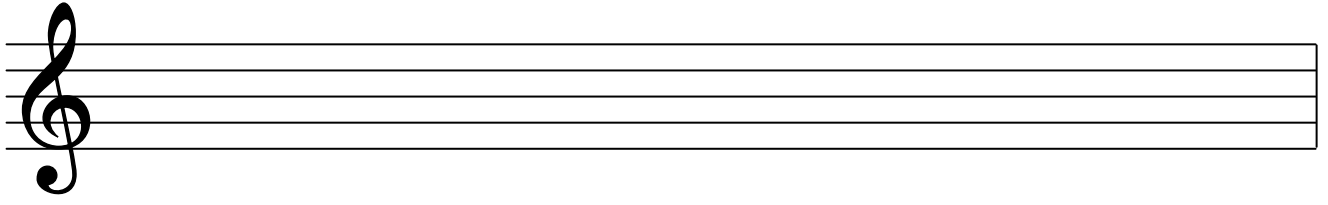


This image shows six blank musical staves, each with a treble clef on the left side. The staves are arranged vertically and are completely empty, intended for writing musical notation.







A vertical sheet of music paper featuring 12 blank musical staves. Each staff is composed of five horizontal lines and begins with a treble clef symbol on the left side. The staves are arranged vertically, one above the other, with consistent spacing between them.